

22/00803/FUL

Amendments to previously approved dwelling (21/01086/FUL) house including an attached garage, a rear orangery, internal alterations including the creation of a 2nd floor and changes to the front and rear fenestration.

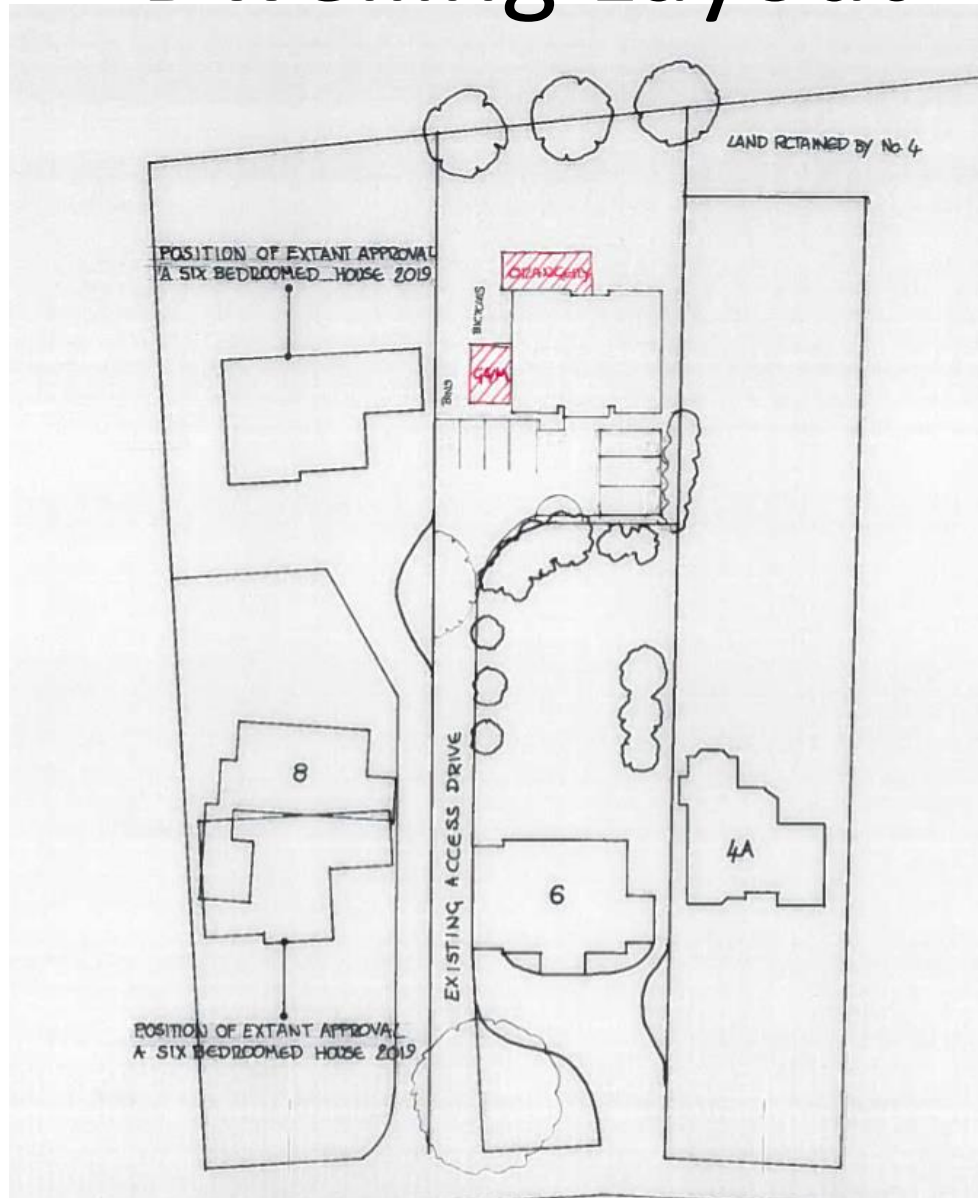
The Keepers, 6A St Catherine's Road, Blackwell,
Worcestershire, B60 1BN

Recommendation: Grant

Location Plan



Dwelling Layout

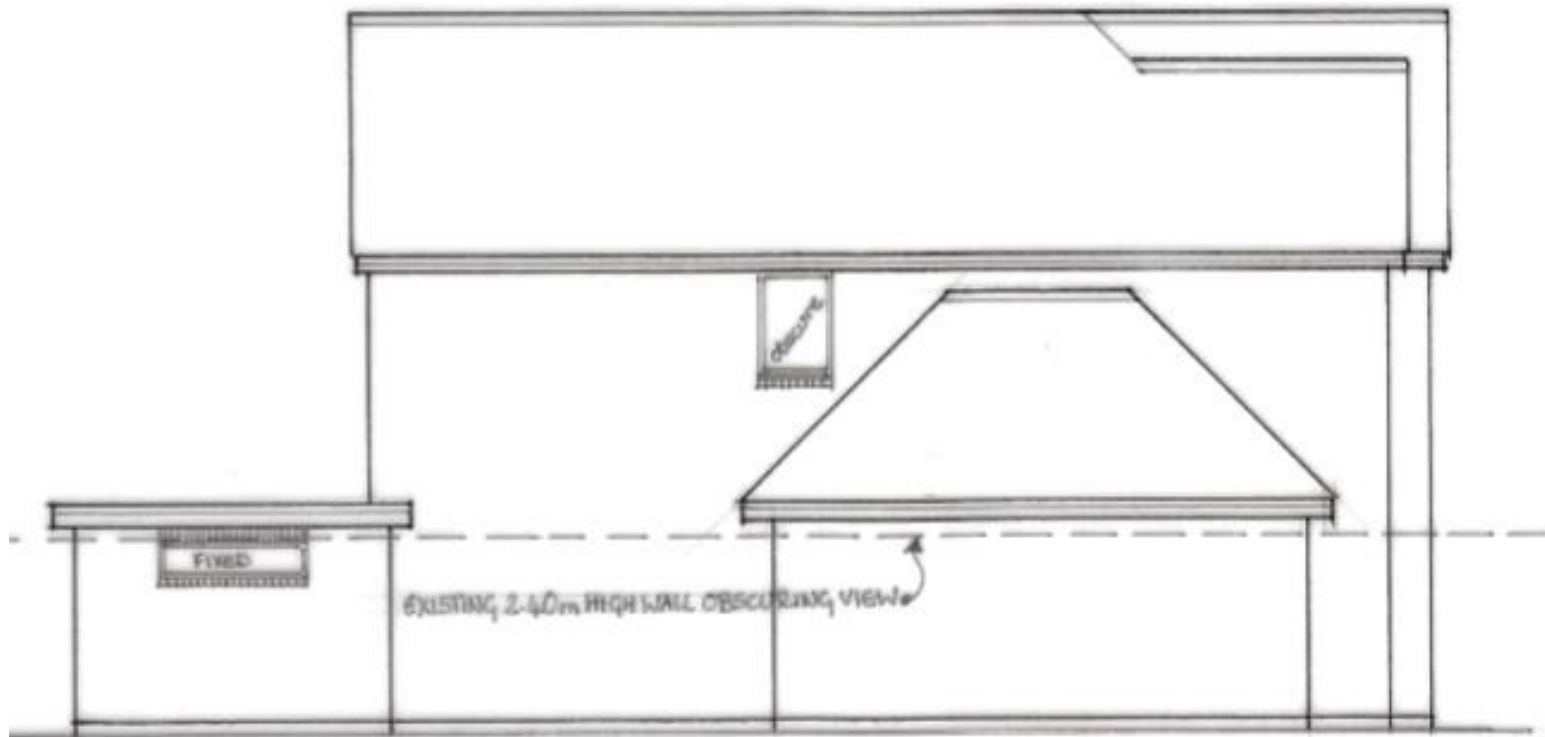


Front and Rear Elevations

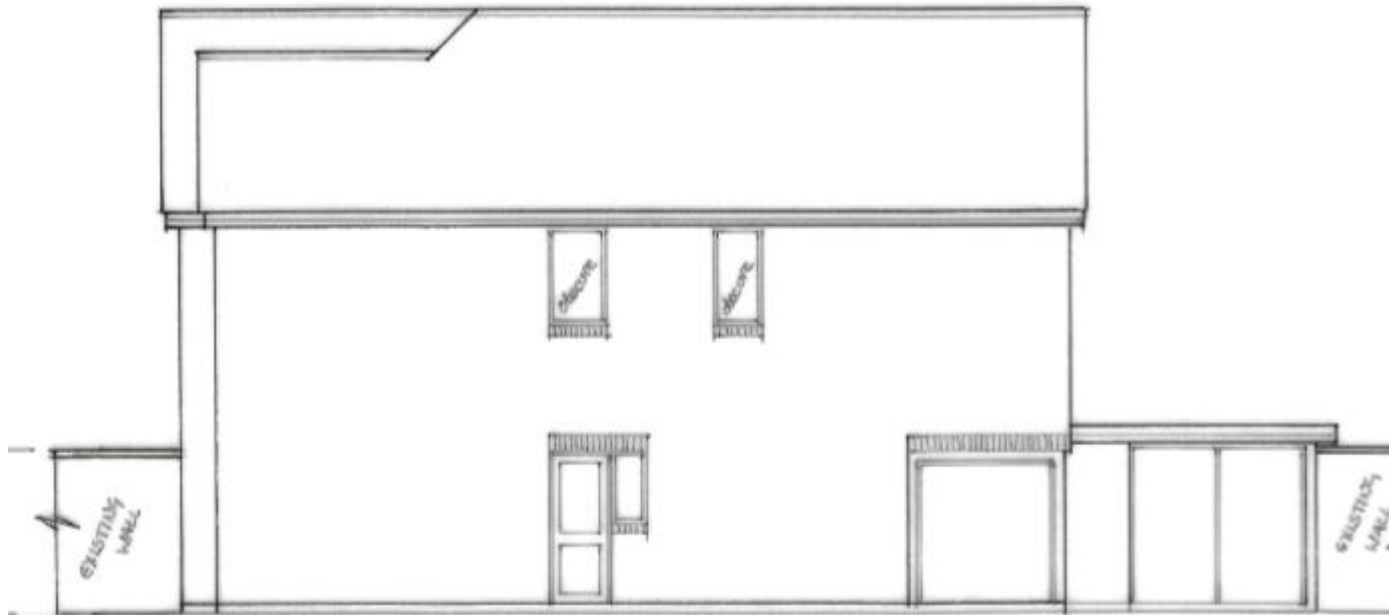


PROPOSED REAR ELEVATION 1100

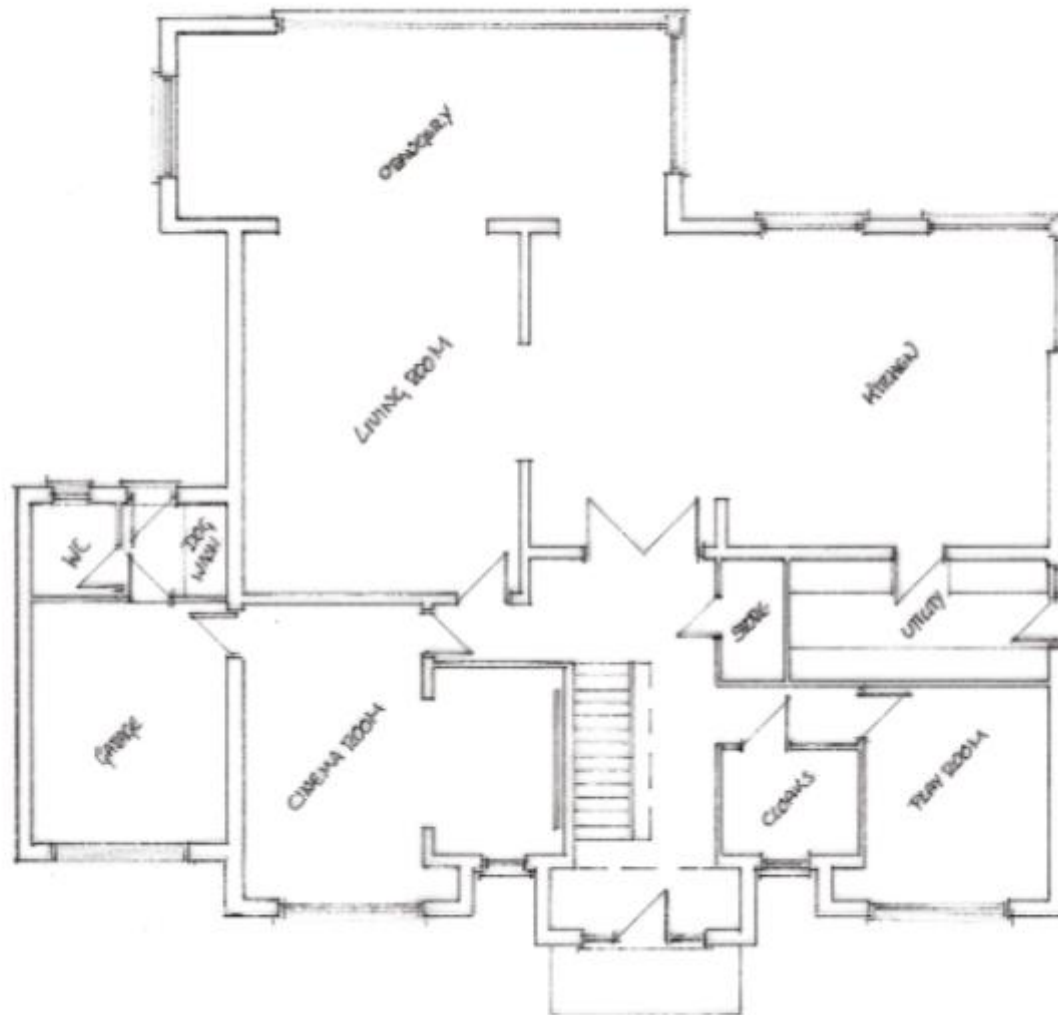
Side Elevation (facing 8 St Catherines Road)



Side Elevation (facing 4A St Catherines Road)

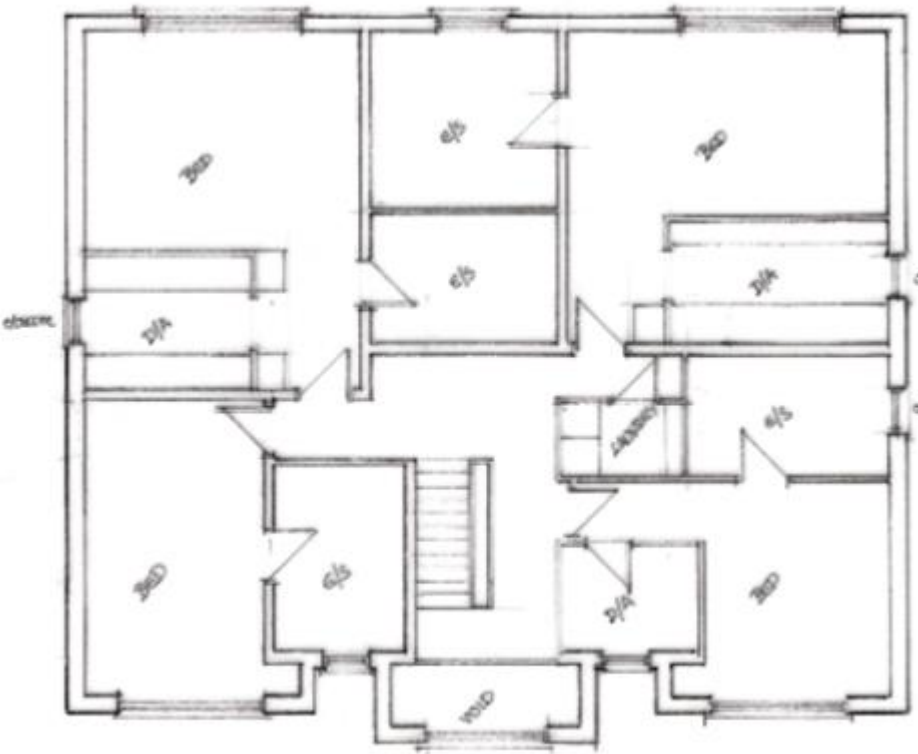


Floor Plan

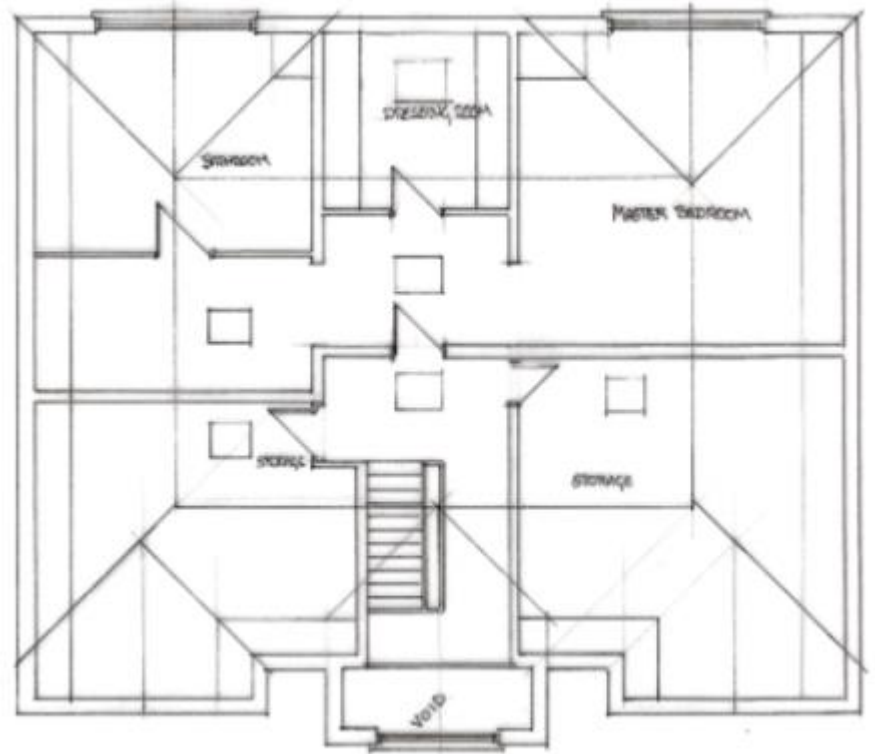


Ground Floor

Floor Plan

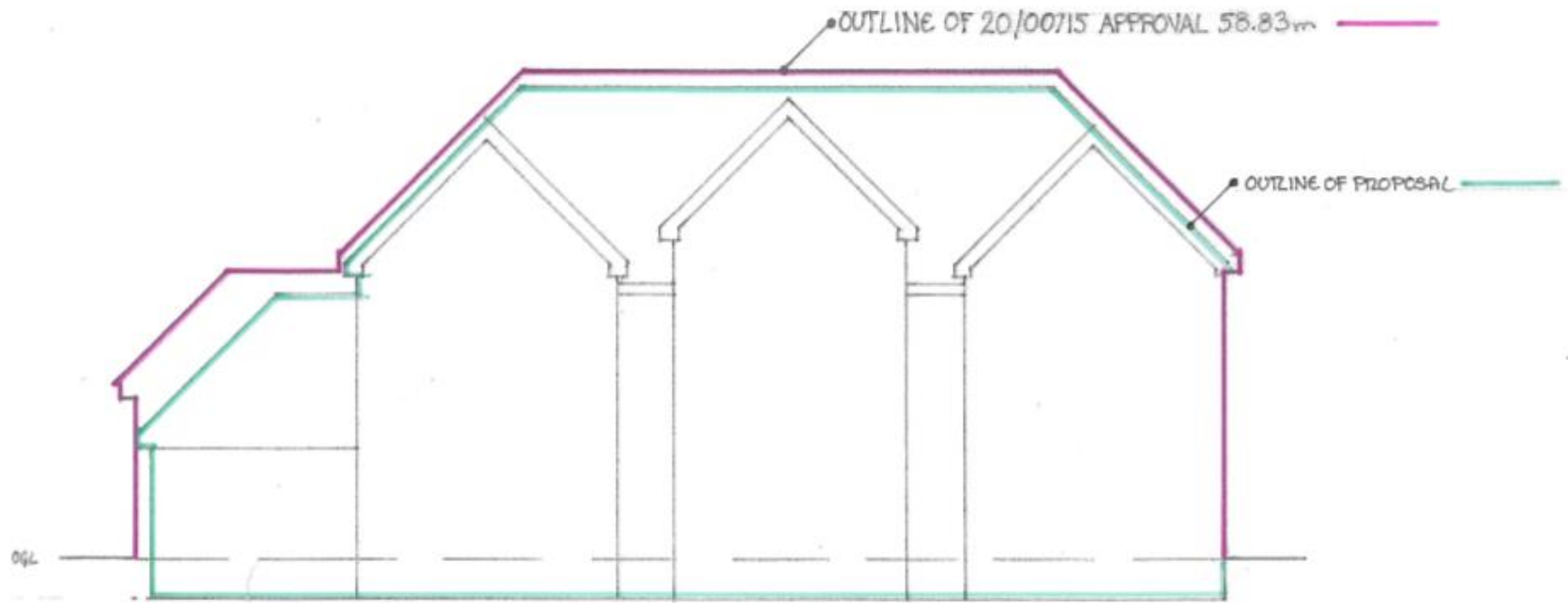


First Floor



Second Floor

Comparison Plans



SUPERIMPOSED COMPARISON ILLUSTRATING
HOW THE PROPOSED DWELLING HOUSE SITS
COMFORTABLY WITHIN THE CONFINES OF
THE EXISTANT PREVIOUS APPROVAL 20/00715



20/00715/FUL
approved
scheme before
level change



21/01086/FUL
approved
scheme after
level change

APPROVED APPLICATION 21/01086



Current proposal
after level change